

# SunraysiaDaily

Friday 26 June 2026 – Saturday 27 June 2026

## REAL ESTATE GUIDE

# TWO TITLES ONE PRICE

Indicative  
outline only

7 Palm Court, Merbein

See Home Focus  
on page 2



## Selling your home?

Advertise your property in the Sunraysia Daily Real Estate Guide and get results.

**SunraysiaDaily**  
REAL ESTATE GUIDE



12861214-AB16-26





# TWO TITLES ONE PRICE

**A MOST** private setting tucked away at the end of the court awaits at this truly unique Merbein opportunity.

Offered for the very first time and proudly held by one owner, this rare property presents two separate titles making it an exceptional lifestyle, investment or future development opportunity.

The family home offers solid brick construction featuring four bedrooms, two bathrooms including en suite to the master bedroom, two generous living spaces and a formal meals area, well-appointed kitchen, classic high ceilings add charm throughout.

While split system heating and cooling, two evaporative air conditioners and a cosy wood heater ensure year round comfort.

Step outside and discover an entertainer's dream with a games room, large in-ground pool, external shower and toilet, paved undercover entertaining area, beautiful established gardens and lawns, caravan access and double carport all set on approximately 1357m<sup>2</sup>.

The second title offers approximately 739m<sup>2</sup> complete with a substantial 16m x 6m shed and is ready to build on (STCA).

A rare chance to secure two titles in one outstanding package. ●



## HOME ESSENTIALS

**Address:** 7 Palm Court MERBEIN **Description:** 4 bedrooms, 2 bathroom, 2 garages **Price:** \$699,000-\$747,000 **Inspect:** Saturday 11:30-12:15

**Contact:** Tim Davey 0409 234 271, email: tdavey@ctfnre.com.au, COLLIE & TIERNEY MILDURA

**2 Sunraysia Daily Real Estate Guide**



MILDURA

2 1 1

**AUCTION**



**TRUE CITY HEART LIVING**

- Perfectly located only a few hundred metres from all the shops, cafes & eateries of the City Heart, it is currently a very successful AirBnB
- Well presented there is a separate entrance hall, lovely bright lounge with bay window & a meals area open to the kitchen
- Ideal rental investment, city heart getaway or fantastic low maintenance home
- The bathroom has been updated & offers both a bath and separate shower, there is double glazed windows, ducted reverse cycle & a lock up garage
- The backyard is a private haven, almost entirely paved & features a pergola for outdoor entertaining

**AUCTION**

**Saturday 4th July  
@12noon On Site  
Terms - 10% Deposit,  
Balance 90 Days  
Saturday 11:15 - 11:45**

82 Olive Avenue  
Robert 0458 658 566  
Shaun 0434 434 499



MILDURA

4 2 2

**NEW LISTING**



**MODERN FAMILY LIVING**

- This is a great 4 bedroom, family sized home has a neutral decor palate throughout - offering wide appeal whether you be an owner occupier or investor
- Inside has both a separate lounge and an open family and meals, providing plenty of living space
- The neat kitchen includes a breakfast bar, dishwasher, gas cook top and electric oven
- All the bedrooms are a good size and the main has both a walk in robe and en suite, plus there is ducted reverse cycle heating and cooling
- Set on great sized, fully fenced block there is genuine separate side access to the backyard
- There is an extensively paved area to the other side and both a shed and a lawn to the rear

**FOR SALE**

Photo ID required

**\$599,000 - \$658,900  
Phone for Inspection**

42 Chardonnay Drive

Patrick Gray  
0484 724 450



67 Lime Avenue  
Mildura

www.ctfnre.com.au

5021 2200



**MILDURA**

🏠 4 🚿 2 🚗 2



**BRAND NEW & READY FOR YOU!**

- Presenting a total of 283m2 under the main roof, there is 218m2 of living + outdoor area
- With quality fixtures throughout, including both a fully tiled bathroom & en suite, huge main walk in robe & so much more!
- Highlights are a generous open family, meals & 6x6m shed that has side access
- All set on a block of 650m2 (approx.)

**FOR SALE** Photo ID required  
**\$775,000 - \$852,000**  
**Saturday 11:00 - 11:30**  
6 Driftsand Court

Patrick Gray  
0484 724 450



**RED CLIFFS**

🏠 3 🚿 1 🚗 2



**TOP QUALITY CITRUS HOBBY FARM**

- Those wanting to live the quieter life look no further! - all set on 6.49Ha (approx)
- Planted with over 2000 high quality & young Cara Cara plus some Eureka lemons
- AUL of 50 megs & 1 meg Water Share plus a variety of shedding, both closed & open bay
- Neat home currently rented on a periodic lease to a long term tenant

**FOR SALE** Photo ID required  
**\$575,000 - \$632,500**

**Phone for Inspection**  
30 Merrijig Avenue  
Robert Stephens  
0458 658 566  
Shaun Stephens  
0434 434 499



**RED CLIFFS**

🏠 2 🚿 1 🚗 2

**NEW LISTING**



**FIRST HOME, DOWNSIZER OR INVEST**

- Set on 675m<sup>2</sup> lot in a quiet court location
- Designed with space and comfort in mind, the home flows effortlessly
- Both bedrooms are of generous size
- Ducted evap cooling & s/s heating and cooling, ceiling fans in bedrooms
- Large undercover entertaining area overlooking the established backyard

**FOR SALE** Photo ID required  
**\$415,000 - \$456,000**  
**Saturday 10:00 - 10:30**  
1 Elinda Court

Glen Crisera  
0407 865 573



**IRAAC**

🏠 3 🚿 1 🚗 2

**NEW LISTING**



**RURAL LOCATION CLOSE TO THE RIVER**

- On 9.3 hectares (approx.) & in a peaceful location between Red Cliffs & Nangiloc
- This neat home has an open lounge & meals area plus a smart, updated kitchen
- A fully renovated & modern bathroom
- The yard around the house is fully fenced and the rest of the land is available for horses, motorbikes, stock or cash crops

**FOR SALE** Photo ID required  
**\$340,000 - \$374,000**  
**Saturday 12:30 - 1:00**

310b Barko Road  
Robert Stephens  
0458 658 566  
Shaun Stephens  
0434 434 499





## 11 Todd Court, *Mildura*

### Grand Family Living in Ularara Estate

 4 |  2 |  2 |  |  1216m<sup>2</sup>

This substantial double-storey family home offers space, comfort and flexibility in a peaceful, family-friendly setting.

- Master suite of grand proportions with ensuite, huge WIR, spa bath and bay window
- Kitchen with breakfast bar and walk-in pantry
- Ducted Reverse Cycle heating/cooling

#### PRICE

\$950,000 - \$990,000

#### INSPECTION

Sat 27 June 10:30 - 11:00am

**Marcus Coppola**  
0411 246 213

**Francis Morello**  
0415 979 891



## 34 The Cobb & Co Way, *Gol Gol*

### Spectacular Riverfront Living

 5 |  4 |  2 |  |  6235m<sup>2</sup>

Positioned within the exclusive Riverbend Estate on the banks of the iconic Murray River, this exceptional residence presents a rare opportunity to secure one of the region's most impressive riverfront homes.

- Well-appointed kitchen with walk-in pantry
- Stunning 25m lap pool, spa and tennis court

#### PRICE

Price on Application

#### INSPECTION

By Appointment

**Jason Lawler**  
0417 248 002



## 8 Dichiera Court, *Mildura*

### Modern Family Living

 4 |  2 |  2 |  639m<sup>2</sup>

Positioned within a popular new estate and tucked away in a peaceful location, this quality family home offers modern comfort, space and convenience.

- Separate lounge & spacious open plan kitchen
- Well-appointed kitchen includes a butler's pantry
- Covered outdoor entertaining area
- Sought-after location

#### PRICE

\$750,000 - \$825,000

#### INSPECTION

Sat 27 June 11:45 - 12:15pm

**Marcus Coppola**

0411 246 213



## 1 Dr Abramowski Court, *Mildura*

### Spacious Family Living on 1,224m<sup>2</sup>

 4 |  2 |  2 |  1224m<sup>2</sup>

Set in a quiet court location, this family home offers plenty of space both inside and out.

- Well-equipped kitchen with stone benchtops, a chef-style cooker and a butler's pantry
- Featuring high ceilings throughout
- Covered entertaining area and swimming pool

#### PRICE

\$690,000 - \$759,000

#### INSPECTION

Sat 27 June 9:30 - 10:00am

**Marcus Coppola**

0411 246 213



**New  
Listing**

## 319 Eighth Street, *Mildura*

### Stunning Townhouse

🏠 3 | 🏠 2 | 🚗 2 | 📏 374m<sup>2</sup>

This stunning town house is well positioned and presents an outstanding opportunity for owner-occupiers, downsizers or investors.

- Expansive open-plan kitchen, meals & living zone
- Master bedroom with ensuite and built-in robe
- Reverse-cycle airconditioning
- Fully enclosed rear yard with established lawns

#### PRICE

\$540,000 - \$580,000

#### INSPECTION

Sat 27 June 11:15am - 11:45am

**Carole Tulloch**

0428 291 639



*Selling  
Mildura's  
Most Beautiful  
Homes*

## 21 Carramar Drive, *Gol Gol*

🏠 5 | 🏠 3 | 🚗 2 | 🏠 1 | 📏 3769m<sup>2</sup>

- Magnificent American Colonial inspired home captures timeless elegance while delivering an extraordinary absolute riverfront lifestyle
- Architectural features including a grand staircase
- Colonial-style kitchen with butler's pantry
- Absolute river frontage with private boat ramp

#### PRICE

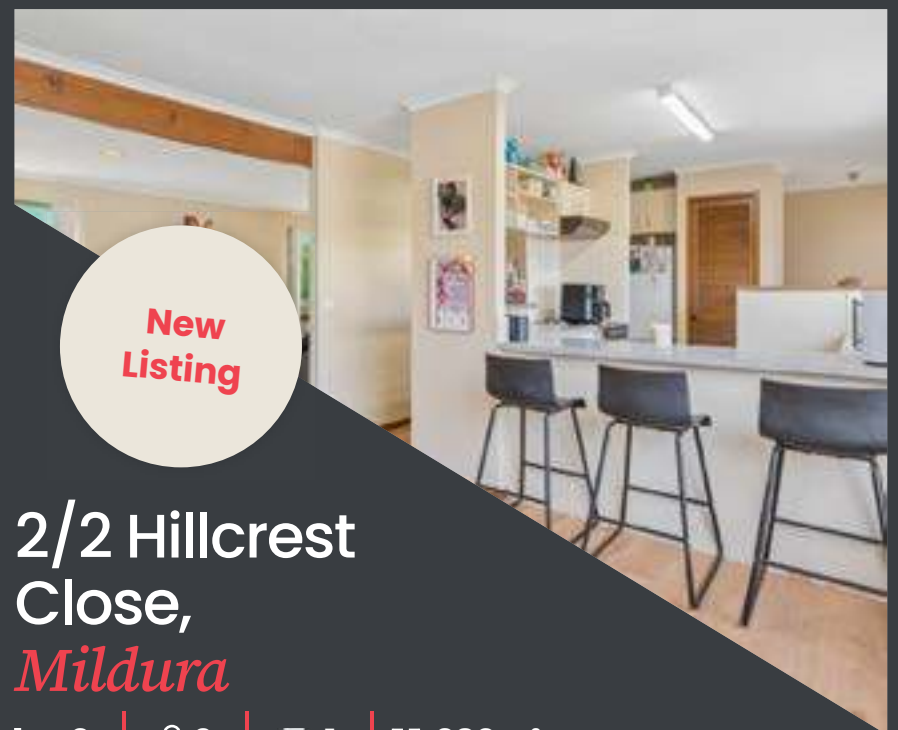
Price on Application

#### INSPECTION

By Appointment

**Jason Lawler**

0417 248 002



**New  
Listing**

## 2/2 Hillcrest Close, *Mildura*

🏠 3 | 🏠 2 | 🚗 1 | 📏 380m<sup>2</sup>

- Located in a quiet court, adjacent to Mildura Aero Ovals & Parks with a Café within walking distance
- Light-filled living area with balcony
- Currently leased to an excellent tenant who would love to stay on
- Fully fenced allotment with low maintenance lawns

#### PRICE

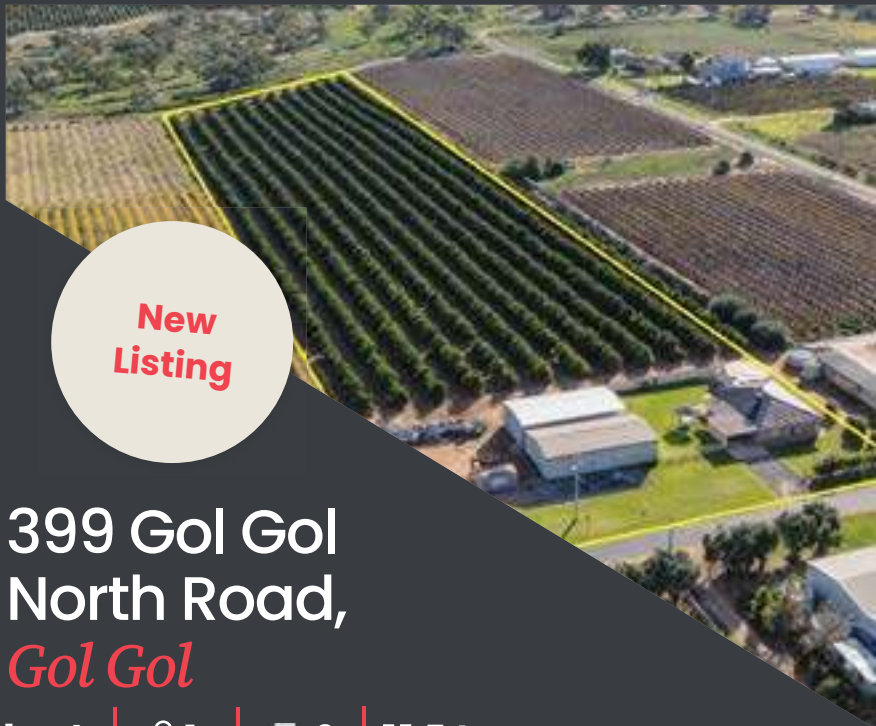
\$490,000 - \$539,000

#### INSPECTION

Sat 27 June 10:30 - 11:00am

**Carole Tulloch**

0428 291 639



**New Listing**

## 399 Gol Gol North Road, *Gol Gol*

🏠 4 | 🏠 1 | 🚗 2 | 📏 7 Acres

- Perfect blend of rural living and supplementary income
- The property is being offered as a walk-in, walk-out opportunity and includes an impressive range of plant and equipment
- Planted to approximately 10-year-old Cara Cara Navel oranges, producing around 300 bins per annum

**PRICE**  
\$950,000

**INSPECTION**  
By Appointment

**Jason Lawler**  
0417 248 002



**New Listing**

## 24 Commercial Street, *Merbein*

🏠 3 | 🏠 1 | 🚗 2 | 📏 801m<sup>2</sup>

- Well-presented home offering space, comfort, and excellent value for homeowners and investors alike
- Currently tenanted
- Spacious yard, offering plenty of room for children, pets, or future improvements
- Expand your investment portfolio or secure a comfortable family home,

**PRICE**  
\$399,000 - \$435,000

**INSPECTION**  
By Appointment

**Loretta Paiano**  
0418 596 789



**AUCTION DATE CHANGE**  
10th July

## Lot 1, 225 Stewart Road, *Red Cliffs*

🏠 4 | 🏠 2 | 🚗 2 | 📏 3000m<sup>2</sup>

- Lifestyle residence in a tranquil rural setting
- Large alfresco area and double carport
- Renovated kitchen / dining area, and large living room
- Ducted reverse cycle air conditioning throughout

**AUCTION**  
Friday 10th July, 12noon Onsite

**INSPECTION**  
By Appointment

**Carole Tulloch**  
0428 291 639  
**Marcus Coppola**  
0411 246 213



**For Sale**

## Norman Road, *Merbein West*

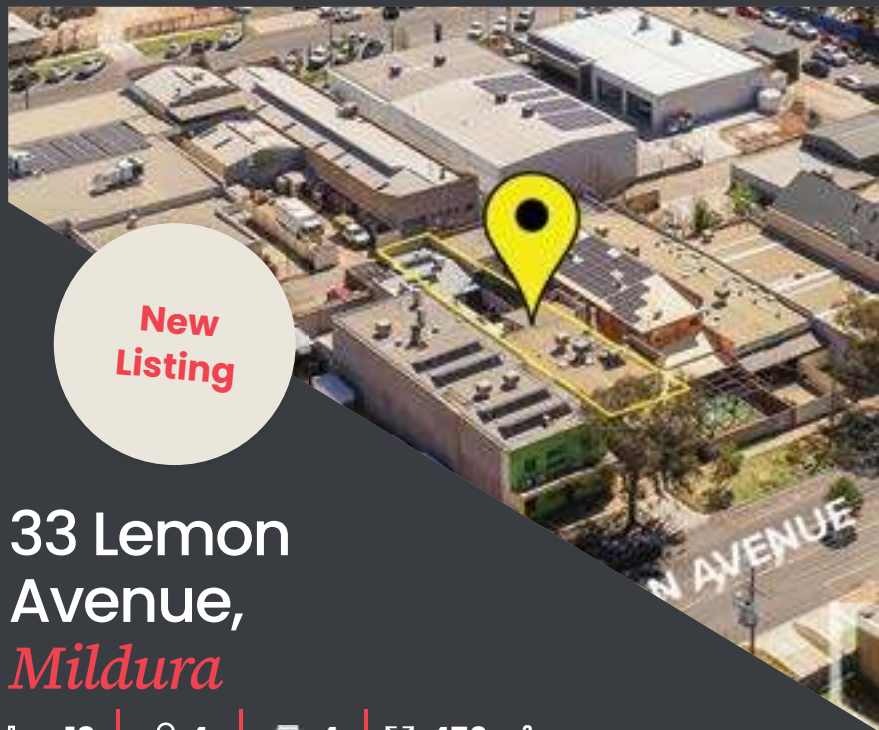
📏 19.07Ha

- Irrigated agricultural land comprising of excellent soil types
- 19.07Ha (47 acres) across 2 titles with 163 Meg AUL
- 5.51Ha ready for planting
- 13.56Ha tilled & ready for planting with overhead sprays
- Pump shed with electric pump & auto-switching system

**PRICE**  
\$600,000 - \$660,000

**INSPECTION**  
By Appointment

**Carole Tulloch**  
0428 291 639  
**Marcus Coppola**  
0411 246 213



**New Listing**

## 33 Lemon Avenue, Mildura

🏠 12 | 🚿 4 | 🚗 4 | 📏 476m<sup>2</sup>

- 12 bedrooms, 4 bathrooms
- Commercial kitchen and cool room
- Separate laundry, secure central courtyard
- Fire safety systems installed
- Rear access off Hawkes Lane, parking on site
- Ideal for PALM scheme or seasonal farm workers, or backpackers

**AUCTION**  
Friday 24 July, 12noon Onsite

**INSPECTION**  
Sat 27 June 11:30 - 12:00pm

**Francis Morello**  
0415 979 891



**For Sale**

## 39 Cowanna Avenue Sth, Merbein South

🏠 5 | 🚿 2 | 🚗 2 | 📏 8.9ha

- Impressive rural holding combining comfortable family living with productive farmland
- Master suite with walk-in robe and ensuite
- Well-appointed kitchen with gas cooking and large walk-in pantry
- Undercover entertaining area with built-in BBQ

**PRICE**  
\$1,390,000 - \$1,500,000

**INSPECTION**  
Sat 27 June 12:45 - 1:15pm

**Marcus Coppola**  
0411 246 213



**For Sale**

## Highland Estate 18 Wilga Road, Gol Gol

### Gol Gol's Newest Residential Subdivision

📏 2000m<sup>2</sup>

Discover Highland Estate, Gol Gol's newest residential subdivision. The perfect setting to build your dream home.

- 34 prestigious allotments, each over 2,000m<sup>2</sup>
- Located just a short stroll to the Murray River
- Close to Gol Gol Primary and Preschools

**PRICE**  
\$260,000 - \$275,000

**INSPECTION**  
By Appointment

**Jason Lawler**  
0417 248 002



# GRAND FAMILY LIVING IN A QUIET COURT LOCATION

**SET** on a generous 1216m<sup>2</sup> (approx.) allotment in the highly sought after Ularara Estate, this substantial double-storey family home offers space, comfort and flexibility in a peaceful, family-friendly setting.

Designed for growing families, the approx. 48sq home features four bedrooms plus a study, multiple living and dining zones, and a well-appointed central kitchen with gas cooking, stylish splash back and granite benchtops, breakfast bar and a huge walk-in pantry.

Upstairs, the spacious master suite includes an ensuite with twin vanities, raised corner spa bath and bay window, while a second living area opens to a private balcony. Entertain with ease under the large

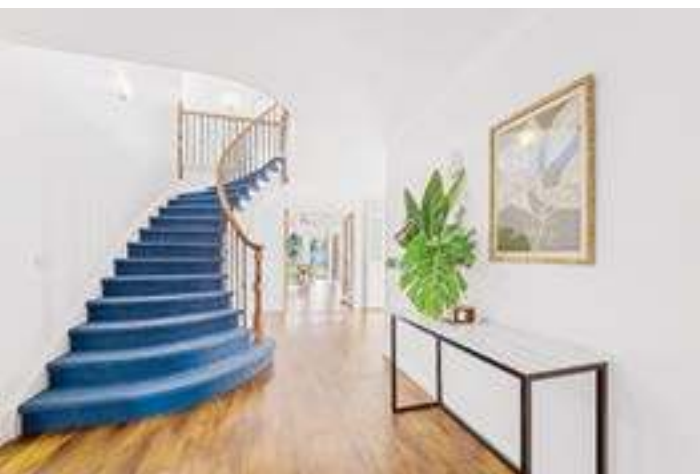
undercover outdoor area, with room for the entire family at Christmas!

Also features Colorbond tradies shed with power, double garage with internal and rear yard access, and a fully fenced backyard with plenty of room for kids and pets.

For the avid gardener there is a blank canvas to design and landscape the garden of your dreams, currently all lush lawns.

Positioned close to schools and the aero sports grounds, this is a rare opportunity to secure a home of scale in one of Mildura's most tightly held pockets. ●

 **Professionals**



## HOME ESSENTIALS

**Address:** 11 Todd Court, MILDURA **Description:** 4 bedrooms, 2 bathrooms, 2 garage, land 1216m<sup>2</sup> **Price:** \$950,000 - \$990,000 **Inspect:** Saturday 10:30am - 11:00am

**Contact:** Marcus Coppola 0411 246 213 or Francis Morello 0415 979 891, PROFESSIONALS MILDURA

**10 Sunraysia Daily Real Estate Guide**



## A SHOWSTOPPING IRYMPLE ENTERTAINER ON 2196SQM

**DAMIAN** Portaro principal and managing director proudly presents for sale this near-new recycled brick residence, a true lifestyle property of scale, quality and serious entertaining power, set on a rare 2196sqm allotment in one of Irymple's most impressive locations.

Designed for families who want space, flexibility and premium finishes, the home offers four bedrooms, including a stunning master suite with a luxurious ensuite. A separate study with built-in desks provides an ideal work-from-home space, while three internal living zones, including a theatre room, kids' retreat and open plan family area, ensure everyone has room to spread out.

At the heart of the home is a beautifully finished kitchen with concrete benchtops, a walk-in pantry and strong connection to the meals and living zone. From here, the dining area flows seamlessly to the enormous outdoor entertaining area, complete with decking, kitchenette and open fireplace, creating a space made for long lunches, celebrations and relaxed evenings with friends.

The pool zone is another standout, with a stunning heat pump heated pool for year-round enjoyment and an adjoining pool

room that takes entertaining to another level. Complete with kitchenette, bar, keg refrigerator and beer taps, plus an outdoor shower and outside toilet, this is a property built to be enjoyed.

The enormous 16m fully insulated and lined shed includes a bathroom and mezzanine floor, with excellent access and enough turning room to easily reverse caravans, boats, trailers or toys. Add in a large rear yard, half-court basketball court, ducted vacuum, dual climate systems, 10kW inverter with 14.8kW of solar panels, FTTP internet, business-grade Wi-Fi points, Cat6 cabling, camera system and insulated internal walls, and you have a home that has been future-proofed with genuine thought.

All of this sits within minutes' walk of the local pub and supermarket, while Irymple remains highly regarded for having one of the most sought-after schools in the district.

This is more than a home. It is a complete family lifestyle package. ●



## HOME ESSENTIALS

**Address:** 12A Claremont Drive, IRYMPLE **Description:** 4 bedrooms, 2 bathrooms, 2 garage **Price:** \$1,599,000-\$1,758,000 **Inspect:** Saturday 11am-11.30am

**Contact:** Damian Portaro 0419 838 743 or Katrina Wooton 0431 249 801, RAY WHITE MILDURA



## SALE

232 Koorlong Avenue,  
Nichols Point

Welcome to 232 Koorlong Avenue, a spacious lifestyle property offering the perfect blend of modern family living, space, shedding and outdoor entertaining. Set on approximately 1.11 hectares, this impressive home was built around 2015 and offers a generous floorplan of approximately 260 square metres. With multiple living zones, quality finishes and plenty of room both inside and out, this is a property designed for families who need space without compromising on comfort. Inside, the home features four bedrooms, including a well-appointed master suite complete with its own ensuite. The remaining bedrooms are serviced by a central family bathroom, separate toilet and excellent storage throughout. The heart of the home is the open-plan kitchen and dining area, finished with stone benchtops, quality appliances, dishwasher and a walk-in pantry. The home also offers multiple living spaces, including a separate lounge and rumpus room, making it ideal for growing families or those who love to entertain.

■ We bring the *whole* team

Ray White Mildura 03 5021 9500



4 2 2 1 1

Comfort is well catered for year-round with ducted heating and cooling, ceiling fans and additional features designed for easy everyday living. Outside is where this property really shines. A large outdoor entertaining area overlooks the spacious surrounds, while the impressive shedding, measuring approximately 18m x 7.5m, provides excellent storage, workshop space or room for vehicles and equipment. Adding even more value is the large solar system, noted at approximately 13kW, helping reduce running costs. The property also features an in-ground pool, making it a fantastic family lifestyle package.

**Sale**  
\$1,599,000 - \$1,758,900

**View**  
Sat 11:45 - 12:15pm  
Mon 5:00 - 5:30pm

**Damian Portaro**  
0419 838 743  
damian.portaro@raywhite.com

**Katrina Wootton**  
0431 249 801  
katrina.wootton@raywhite.com



# SALE

4 2 2

## 99-101 Eleventh Street, Mildura

Set on a substantial 1,301m<sup>2</sup> allotment, this impressive family residence offers an exceptional combination of space, comfort and lifestyle. Designed to accommodate growing families and those who love to entertain, this feature-packed property presents a rare opportunity to secure a home with everything already in place. Inside, the home offers four generous bedrooms, two well-appointed bathrooms and the added benefit of a dedicated study or home office, providing the perfect space for those working from home, running a business or simply needing a quiet place to study.

**Sale**  
\$649,000 - \$699,000

**View**  
Sat 11:00 - 11:30am

**Luke Hermans**  
0488 520 846  
luke.hermans@raywhite.com

We bring the *whole* team  
Ray White Mildura 03 5021 9500

[raywhitemildura.com.au](http://raywhitemildura.com.au)

12879722-MR26-26



Landscaping for illustrative



# SALE

3 2 2

## 11/36 Foster Street, Merbein

Never before lived in and only just completed, this four bedroom home delivers the appeal of a fresh build without the wait. Whether you are a first home buyer wanting something new, an investor seeking a strong low maintenance asset, or a buyer looking for simple modern living, this property presents an excellent opportunity. Inside, the home has been designed for everyday comfort and practicality. The open plan kitchen, meals and living area forms the central hub, creating a light and functional space for relaxing, dining and entertaining.

**Sale**  
\$574,000 - \$631,000

**View**  
Sat 9:30 - 10:00am  
Wed 5:00 - 5:30pm

**Damian Portaro**  
0419 838 743  
damian.portaro@raywhite.com

**Christian Sapuppo**  
0428 545 385  
christian.sapuppo@raywhite.com

We bring the *whole* team  
Ray White Mildura 03 5021 9500

[raywhitemildura.com.au](http://raywhitemildura.com.au)

12879724-MR26-26

The RayWhite logo is positioned in the top right corner of the advertisement. It consists of the brand name "RayWhite" in a bold, black, sans-serif font, set against a bright yellow rectangular background.The background of the top half of the advertisement is a photograph of a hand holding a yellow key with the RayWhite logo on it, offering it to another hand. The background is a soft-focus green, suggesting an outdoor setting.

# MAKE THE MOVE

## TO RAY WHITE PROPERTY MANAGEMENT

Make the switch with ease and access **exclusive investor offers** this June, tailored to suit your investment.

- ✓ We handle the entire switch
- ✓ No disruption to your tenancy
- ✓ Real value where it matters

Ray White Mildura  
03 5021 9500  
mildura.vic@raywhite.com  
[raywhitemildura.com.au/makethemove](http://raywhitemildura.com.au/makethemove)

■ We bring the *whole* team



12879725-MR26-26



**SALE**

101 Cooke Street, Nichols Point

Positioned on the pristine banks of Kings Billabong with an extraordinary 107 metres of direct waterfrontage, this is a lifestyle opportunity that simply cannot be replicated. From the moment you arrive through the impressive gated entrance, the sense of privacy and exclusivity is undeniable. With a protected nature reserve bordering one side, no immediate neighbours and uninterrupted panoramic water views, this property delivers a level of tranquillity rarely found.

■ We bring the *whole* team

Ray White Mildura 03 5021 9500



**Sale**  
Fixed Date Closing 14th Jul 6pm  
\$2,750,000 - \$3,025,000

**Katrina Wootton**  
0431 249 801  
katrina.wootton@raywhite.com

**View**  
Sat 12:30 - 1:00pm

raywhitemildura.com.au



**SALE**

12 Desroy Avenue, Mildura

Set in a sought-after Mildura location, this well-presented home offers space, flexibility and a standout outdoor area. Three bedrooms in the main residence, a separate granny flat that takes the count to four, and a great entertaining space, all on a generous 801m2 block. The main home features three comfortable bedrooms and highlights beautiful character features, including polished boards & high ceilings. It is serviced by a central bathroom and includes relaxed living and dining areas that suit everyday family life.

■ We bring the *whole* team

Ray White Mildura 03 5021 9500



**Sale**  
\$620,000-\$680,000

**Luke Hermans**  
0488 520 846  
luke.hermans@raywhite.com

**View**  
Sat 10:15 - 10:45am

raywhitemildura.com.au

12879726-MR26-26



## SALE

28 Leonard Street, Mildura

Filled with warmth, charm and timeless appeal, this beautifully maintained three-bedroom home offers comfortable living with all the character features buyers love. From the moment you arrive, the established gardens and inviting street presence create a welcoming first impression, setting the tone for what awaits inside. Step through the door to discover polished floorboards, adding both style and character. The practical floorplan centres around an open-plan kitchen and dining area, providing the perfect space for everyday living, family meals and entertaining guests.

■ We bring the *whole* team

Ray White Mildura 03 5021 9500

3 1 2

**Sale**  
\$425,000-\$467,500

**View**  
Appointments available via  
raywhitemildura.com.au

**Luke Hermans**  
0488 520 846  
luke.hermans@raywhite.com

raywhitemildura.com.au



## SALE

318 Sixteenth Street, Mildura

Conveniently located on approx. 512m<sup>2</sup> allotment, this beautifully family home delivers comfort, functionality, and modern living in one impressive package. Step inside and discover a thoughtfully designed floorplan featuring two spacious living areas, offering flexibility for growing families, entertaining guests, or simply relaxing in style. The large study nook with built-in desk creates the perfect work-from-home space or dedicated homework zone for the kids.

■ We bring the *whole* team

Ray White Mildura 03 5021 9500

4 2 2

**Sale**  
\$650,000 - \$690,000

**View**  
Sat 11:00 - 11:30am

**Rico D'Amico**  
0418 516 773  
rico.damico@raywhite.com

raywhitemildura.com.au

12879728-MR26-26



RayWhite



**SALE**

127 First Street, Nichols Point

Set on approximately one acre, 127 First Street offers an exciting chance for visionaries, renovators, investors and those seeking a substantial parcel of land in a highly desirable lifestyle location.

**Sale**  
Fixed Date Closing 14th Jul 6pm  
\$440,000 - \$484,000

**View**  
Sat 11:00 - 11:30am

**Katrina Wootton**  
0431 249 801  
katrina.wootton@raywhite.com

raywhitemildura.com.au

■ We bring the *whole* team  
Ray White Mildura 03 5021 9500



RayWhite



**SALE**

19 Villiva Drive, Mildura

Set on approximately 862sqm, this four-bedroom, two-bathroom home combines generous living, excellent side access and a poolside setup that makes an immediate impression. The home offers multiple living zones that make everyday family life easy.

**Sale**  
\$749,000 - \$823,000

**View**  
Mon 5:00 - 5:30pm

**Damian Portaro**  
0419 838 743  
damian.portaro@raywhite.com

**Christian Sapuppo**  
0428 545 385  
christian.sapuppo@raywhite.com

raywhitemildura.com.au

■ We bring the *whole* team  
Ray White Mildura 03 5021 9500



RayWhite



**SALE**

1/230 Eighth Street, Mildura

A neat and low-maintenance two-bedroom unit, positioned on Mildura's west side and offering a smart opportunity for investors seeking secure income in a convenient location. Set opposite Mansell Reserve and close to the CBD.

**Sale**  
\$299,000-\$328,000

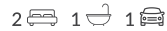
**View**  
Sat 10:15 - 10:45am

**Damian Portaro**  
0419 838 743  
damian.portaro@raywhite.com

**Christian Sapuppo**  
0428 545 385  
christian.sapuppo@raywhite.com

raywhitemildura.com.au

■ We bring the *whole* team  
Ray White Mildura 03 5021 9500



RayWhite



**SALE**

10 Mayfield Rise, Mildura

Set on a substantial 1,129sqm allotment in a tightly held Mildura pocket, this is a home that immediately feels special. The location is known for its established family appeal and convenient access to schools, parks and shopping.

**Sale**  
\$1,030,000 - \$1,133,000  
Sat 11:00 - 11:30am

**View**  
Tue 5:00 - 5:30pm

**Damian Portaro**  
0419 838 743  
damian.portaro@raywhite.com

**Christian Sapuppo**  
0428 545 385  
christian.sapuppo@raywhite.com

raywhitemildura.com.au

■ We bring the *whole* team  
Ray White Mildura 03 5021 9500



12877920-AB25-26



# IT'S A RESORT LIFESTYLE!

**LOCATED** in the ever-popular Ularara Estate is this stunning residence which offers resort style living year-round!

Boasting four generous bedrooms, master with walk through robe and ensuite, also with doors leading to the outdoor area.

Featuring a kitchen to entertain in, with 900mm cooktop oven, huge stone island bench with loads of storage and bench space and walk-in pantry, the home offers multiple living zones including a theatre room, along with a large home office.

Step outside and you will be impressed, the on trend outdoor enclosed entertaining area overlooking a beautiful heated inground

pool, complete with an outdoor bar, shower and shed, and the perfectly manicured backyard makes this easy low maintenance living.

Boasting multiple car parks, plus double garage, side access and caravan storage space, reverse cycle heating and cooling and rooftop solar power - just move in and enjoy this modern home today! ●



## HOME ESSENTIALS

**Address:** 17 Leicester Street, MILDURA **Description:** 4 bedrooms, 2 bathrooms, 2 garage **Price:** \$835,000-\$885,000 **Inspect:** Saturday from 10.45am

**Contact:** Tim and Amanda Aldridge 0407 239 917, email: tim@mildurapropertyadvisers.com.au, MILDURA PROPERTY ADVISERS

**20 Sunraysia Daily Real Estate Guide**

# Mildura Property Advisers

Put Your Property In Our Hands



29 Cherry Avenue, Mildura

4 2 3 539m<sup>2</sup>



## PRIVATE INNER CITY GEM!

Tucked in private inner-city location, with only one neighbour and just a short stroll to Mildura Arts Centre, City Heart retail precinct and our stunning riverfront is the unique character filled home.

Featuring timber floor, and stunning bay window, upgraded kitchen, three large bedrooms to main living and a fully self-contained single bedroom studio apartment.

Offering the opportunity for an extra income stream or ideal for multi-generational families want to live under the same roof and enjoy a wonderful inner-city lifestyle.

Complete with outdoor decked and undercover private entertaining area, shedding, multiple off-street, car parking and generous rear yard - don't miss the truly rare find!



**For Sale**  
\$650,000 - \$715,000

**Open:**  
Phone To Inspect



**Tim and Amanda Aldridge**  
0407 239 917

159 Cureton Avenue, Nichols Point

3 1 2 3001m<sup>2</sup>



## WHAT A GREAT STARTER IN NICHOLS POINT

Located in sought after Nichols Point, on the Mildura city edge, is this solid home.

With all the hard work done and ready to move straight into, with some minor upgrades this 3-bedroom home could become something special. With relatively new roof and guttering, upgraded bathroom and kitchen, two living zones, high ceilings throughout, rooftop solar and town water connected, solid stumps underneath, and surrounded by established gardens, with cubby for the kids, APCO Shed/workshop and slab to extend.

Complete with elevated views over neighbouring vines, close to Nichols Point Primary School, shops and sporting reserve and short drive to Mildura's CBD, don't miss this affordable opportunity in one of our region's most sought-after areas.



**For Sale**  
\$475,000 - \$520,000

**Open:**  
Saturday from 10am



**Tim and Amanda Aldridge**  
0407 239 917

47 Cadell Street, Wentworth

4 2 2 1000m<sup>2</sup>



## LIVING THE PEACEFUL LIFE!

Enjoy living just short stroll to the stunning Murray-Darling River junction in this beautifully presented four-bedroom home. Quality built in 2017, this home features 4 large bedrooms (or three-bedroom and two separate living zones), built in robes to all (ensuite and walk in robe to master).

With central kitchen offering gas cooking, overlooking main living area and outdoor entertaining. Offering plenty of storage space, ducted reverse cycle throughout and 10kw rooftop solar. Complete with rear lane access (with auto gate), large 6m x 12m shed (floor, lights, power & auto doors) plus trailer undercover parking, container storage, established gardens, variety of citrus trees and spacious undercover outdoor entertaining. Adjoining well-maintained parkland, and just a short walk to the Wentworth shops, restaurants & pubs!



**For Sale**  
\$570,000 - \$625,000

**Open:**  
Phone To Inspect



**Tim Aldridge**  
0407 239 917

75 Seventh Street, Mildura

3 1 1 398m<sup>2</sup>



## COMMERCIAL ZONING - MULTIPLE INCOME STREAMS!

Positioned close to the Mildura Marina, Mildura City Heart, and riverfront, is this affordable residential/commercial investment. Boasting a high visibility location for any future business, with prominent Billboard signage to busy Seventh Street & San Mateo roundabout (leading to the VIC/NSW border bridge and highway traffic - currently leased for \$200/wk as signage space). Offering side and rear lane access and 398 sqm of land, the property features a modest weatherboard home, fully compliant as residential investment property, currently leased to long-term tenants for \$290 per week. Complete with flexible Commercial 1 Zoning, and the option of building, using, and /or separately leasing as a commercial shed or as is as vacant land for storage, the property is an ideal future commercial development site for the savvy investor looking for immediate income and multiple income streams.



**For Sale**  
\$390,000 - \$420,000

**Open:**  
Phone To Inspect



**Tim and Amanda Aldridge**  
0407 239 917



# STYLISH FAMILY LIVING

**PERFECTLY** positioned in one of Mildura's most desirable neighbourhoods, 4 Watson Avenue presents a lifestyle opportunity that effortlessly combines modern comfort, generous proportions, and everyday convenience.

Designed with growing families in mind, the home offers four spacious bedrooms, two well-appointed bathrooms, and a dedicated study, providing the flexibility to accommodate busy family life, remote work, or guest accommodation. Thoughtful design and quality finishes are evident throughout, creating a home that feels both welcoming and functional from the moment you step inside.

At the heart of the residence lies a beautifully appointed kitchen, complete with stone benchtops, quality appliances, and a generous walk-in pantry. Overlooking the expansive open-plan living and dining area, the space serves as a natural gathering point for family and friends while delivering the practicality required for everyday living.

Entertaining is equally impressive, with a covered outdoor area enhanced by electric heaters, allowing the space to be enjoyed throughout the seasons. Whether it's a relaxed family dinner, weekend barbecue, or celebrating special occasions with friends, the outdoor setting offers the perfect extension of the home's living areas.

Location is another standout feature. Positioned within easy walking distance of Mildura's sporting precinct, quality schools, and Mildura Central Shopping Centre, the property places convenience firmly at the forefront while maintaining the peaceful appeal of a highly sought-after residential pocket.

Offering space, style, and an enviable lifestyle, 4 Watson Avenue represents an outstanding opportunity for families seeking a quality home in a premium Mildura location. ●

 **BARRYPLANT**



## HOME ESSENTIALS

**Address:** 4 Watson Avenue, MILDURA **Description:** 4 bedrooms, 2 bathrooms, 2 garage **Price:** \$735,000 - \$799,000 **Inspect:** Saturday 12:30 - 12:50

**Contact:** Brenton Love 0418 372 756 or Sharn Brander 0419 402 083, BARRY PLANT MILDURA

**22 Sunraysia Daily Real Estate Guide**



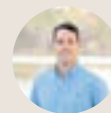
**2 EMERALD DRIVE MILDURA**

3 2 2 922m<sup>2</sup>

**FUNCTIONAL FAMILY LIVING WITH OUTSTANDING SHED SPACE**

This spacious family home offers the perfect combination of comfort, functionality, and outstanding shedding on a generous 922m<sup>2</sup> allotment. Designed with growing families in mind, this well-appointed residence features three bedrooms, two bathrooms, and multiple living zones, including two separate living areas that provide plenty of room for the whole family to relax and unwind. Year-round comfort is assured with evaporative cooling and split system heating and cooling throughout the home. Step outside and discover a standout feature of the property – extensive shedding and storage options. A substantial 6.5m x 6.5m shed, an additional 10m x 6m shed, and a garden shed provide ample space for vehicles, tools, hobbies, or workshop needs. The expansive backyard offers plenty of room for children and pets to enjoy while still leaving space for entertaining and outdoor living. Positioned in a sought-after location, this property presents an outstanding opportunity for families, tradies, or anyone seeking extra space both inside and out.

**FOR SALE** \$675,000 - \$742,500  
**OFI** Sat 27 June 9:45-10:15am



**BRENTON LOVE**  
 0418 372 756



**SHARN BRANDER**  
 0419 402 083

**BARRY PLANT MILDURA**  
 03 5021 4600



12879601-MR26-26

# GARAGE SALE BONUS

## Selling your home?

*It's time to clear out all your unwanted items!*

Lodge your Saturday Garage Sale advertisement before 1pm Friday and receive a **FREE Garage Sale Kit**

### FREE Garage Sale Kit

- Garage Sale Signs
- Price Stickers
- Balloons
- Marking Pen
- Tips for Garage Sale Success



**SunraysiaDaily**  
[www.sunrasyiadaily.com.au](http://www.sunrasyiadaily.com.au)

We accept



25 Madden Avenue, Mildura - Phone 5023 0211  
 Office hours: Monday, Thursday and Friday 9am-5pm

12850146-MR10-26

# LOCAL. TRUSTED. PROFESSIONAL. MEET FRANCIS MORELLO



**FOR** Licensed Estate Agent and Auctioneer Francis Morello, trust and empathy is the most important attribute when dealing with clients

For Francis, being open and honest is something he won't compromise on, particularly when people are making some of the biggest financial decisions of their lives. Doing the right thing by people is just part of who he is.

Born and raised in Mildura, Francis grew up on his family's vineyard, where, like a lot of other local youngsters, weekends and school holidays were spent working hard on the block.

Those early years taught him good life lessons that have stayed with him throughout his life – that success is earned through a willingness to put in the work.

After completing Year 12, Francis moved to Melbourne, where he built an impressive real estate career over almost twenty years.

However, home was never far from his heart. In 2023, he decided to return to Mildura, appreciating the lifestyle, community spirit and sense of belonging that only his hometown could provide.

Now proudly part of The Professionals team, Francis brings extensive industry knowledge, strong negotiation skills and a genuine passion for helping people achieve their property goals.

Whether he's conducting an auction, listing a family home or guiding first-home buyers through the process, he treats every client with

honest and open communication.

I've always believed that when people are making some of the biggest financial and emotional decisions of their lives," Francis says, "it is my responsibility as their real estate agent to keep them informed every step of the way, whether the news is good or challenging."

While technology plays an important role, Francis still values meeting clients face to face. He believes the best conversations begin by listening first.

Francis has found himself right at home within The Professionals' supportive team culture; he believes working together with his team delivers better outcomes for clients.

Away from the office, Francis enjoys giving back to the community by volunteering his auctioneering services for charities, sporting clubs and local fundraising events.

For Francis, returning home has been one of the best decisions he's ever made. His message to his local community is that his door is always open.

If you are thinking about buying or selling, or simply want an honest, relaxed chat about the market - call him anytime on 0415 979 891. ●

**Professionals Real Estate Mildura welcomes Francis Morello to the team.**  
Photo: supplied

You can *rely* on Elders.

Elders



Receivers' Sale



'PINACLE FARM',  
RED CLIFFS, VIC

87.23 Ha | 215.55 Ac\*

### Premium horticultural enterprise.

- 46.9 ha\* of actively managed table grape vines including 33.2 ha\* of Crimson Seedless and 13.7 ha\* of PBR protected varieties
- 19.4 ha\* is established to high-quality trellis and irrigation infrastructure, but is not in production
- Further expansion opportunities with 11.0 ha\* of vacant land
- Substantial cool room/packing shed (1,420 sqm)\*
- High quality irrigation/fertigation infrastructure.

EOI Closing  
16th Jul, 4pm

Elders

Nick Myer  
0427 610 278  
Marty Deacon  
0429 953 365  
Henry Mackinnon  
0408 408 299



128746-48-MR24-26

Elders

eldersrealestate.com.au

Why choose us  
if you are...

BUYING or SELLING your  
PROPERTY in VICTORIA

allstate  
conveyancing



We offer friendly personalised service and local knowledge of the Sunraysia District.

- All conveyancing needs for Victorian properties
- Water transfers
- Private contracts of Sale
- Registered Office for Stewart Title Ltd - Title Insurance
- Auction contracts
- Section 32 Statements



Sheree Hengen is a Member of the Australian Institute of Conveyancers (Vic Division), Licensee No. 000072L under the Conveyancers Act 2006.

170 Eighth Street, Mildura Phone 5023 5355

12834486-MR05-26

## SunraysiaDaily

REAL ESTATE GUIDE

25 Madden Avenue, Mildura, 3500

WEBSITE: www.sunraysiadaily.com.au

CLASSIFIEDS: Phone: 1300 666 808 Email: sales@networkclassifieds.com.au

ADVERTISING: Phone: 03 5023 0211 Email: advertising@sunraysiadaily.com.au

EDITORIAL: Phone: 03 5023 0211 Email: editorial@sunraysiadaily.com.au

Published by SA Today Pty Ltd. ACN 644 311 937.

All material is copyright to SA Today Pty Ltd. All significant errors will be corrected as soon as possible. Distribution numbers, areas and coverage are estimates only. For our terms and conditions, please visit [sunraysiadaily.com.au/terms-and-conditions](http://sunraysiadaily.com.au/terms-and-conditions).



1, 2 & 3/428 Walnut Avenue, Mildura

🛏 6 | 🗨 3 | 🚗 3

### Three Opportunities, One Address

For sale

Offering flexibility rarely found in today's market, this complex of three brick units presents an appealing opportunity for investors seeking immediate income, future growth potential or the ability to secure multiple properties in a single transaction. For those seeking a smaller investment, each unit is also available for individual purchase, with prices ranging from \$330,000 to \$363,000. Whether you're looking to purchase a single unit, add multiple properties to your portfolio or secure the entire complex, this is a rare opportunity to acquire a versatile investment!

**Price** \$990,000 - \$1,089,000  
**Viewing** Sat 27th June, 10:00am - 10:30am  
 Mon 29th June, 5:00pm - 5:30pm  
**Contact** Mark Thornton 0408 534 772



52 Cassia Street, Red Cliffs

🛏 3 | 🗨 2 | 🏊 1

### The Lifestyle Property You Have Been Waiting For

For sale

Set on just shy of five acres of prime rural land, this impressive lifestyle property delivers the perfect balance of space, comfort and practicality, all within minutes of the Red Cliffs township. Offering room for families to grow, entertain and enjoy a peaceful country setting, this is a property that caters to a wide range of buyers seeking a lifestyle change without sacrificing convenience. A rare opportunity to secure a spacious lifestyle property with modern improvements, quality shedding and excellent infrastructure, all within easy reach of town conveniences.

**Price** \$795,000 - \$874,500  
**Viewing** Sat 27th June, 9:00am - 9:30am  
 Mon 29th June, 5:00pm - 5:30pm  
**Contact** Tom Dawe 0455 400 382



3 Stamford Court, Buronga

🛏️ 4 | 🚗 2 | 🚗 2

### A Stamford Court Surprise

For sale

Whether it's hosting family barbecues, accommodating weekend projects in the shed or simply enjoying a relaxed lifestyle, this well-kept Buronga home offers the space and functionality to do it all. Thoughtfully designed, with a layout to be enjoyed both inside and out!

---

<b>Price</b>	\$620,000 - \$682,000
<b>Viewing</b>	Sat 27th June, 11:45am - 12:15pm
<b>Contact</b>	Mark Thornton 0408 534 772

---



8 Cielo Court, Gol Gol

### Space To Create, Location To Love

For sale  
1300m<sup>2</sup>

This generous 1,300m<sup>2</sup> allotment offers ample space to design without compromise, with room to create a substantial residence while still accommodating any additional features. Build your future, and enjoy the lifestyle that Creekside Estate has to offer.

---

<b>Price</b>	\$220,000 - \$242,000
<b>Viewing</b>	Phone for Information
<b>Contact</b>	Mark Thornton 0408 534 772

---



Lot 1, Belar Avenue, Irymple

### A Future Built Your Way

For sale  
3000m<sup>2</sup>

Offering ample space to design without compromise, this allotment provides the freedom to create the lifestyle you've always envisioned. Whether it's a family residence, extensive shedding, a pool, landscaped gardens or all of the above, there's room here to make it happen.

---

<b>Price</b>	\$350,000 - \$385,000
<b>Viewing</b>	Phone for Information
<b>Contact</b>	Mark Thornton 0408 534 772

---



13 Como Drive, Irymple

### Endless Irymple Possibilities

For sale

Renowned as one of Sunraysia's most desirable areas, Irymple provides everything a family could need. Highly regarded schools, a local supermarket, restaurants, takeaways, and even a public pool. Don't miss your opportunity to secure this 696m<sup>2</sup> allotment!

---

<b>Price</b>	\$185,000 - \$195,000
<b>Viewing</b>	Phone for Information
<b>Contact</b>	Tom Dawe 0455 400 382

---



43 Verdi Boulevard, Irymple

🛏️ 4 | 🗨️ 2 | 🚗 2

### Exceptional Family Home

For sale

Nestled in one of Irymple's most sought-after locations, this impressive near new home offers the perfect blend of modern style, functionality, and family living. Only recently built, the home has been thoughtfully designed to provide comfort, space, and versatility for growing families.

---

<b>Price</b>	\$695,500 - \$765,000
<b>Viewing</b>	Sat 27th June, 11:00am - 11:30am
<b>Contact</b>	Tyler Martin 0437 654 537

---



10 Young Avenue, Irymple

🛏️ 3 | 🗨️ 2 | 🚗 2

### Life From A Different Angle

For sale

Positioned on a prominent 618m<sup>2</sup> corner allotment just moments from the Irymple Hub, local schools and a short drive to Mildura, this beautifully presented residence delivers contemporary comfort, quality finishes and an effortless lifestyle in a sought-after location.

---

<b>Price</b>	\$799,000 - \$878,900
<b>Viewing</b>	Sat 27th June, 10:45am - 11:15am
<b>Contact</b>	Mark Thornton 0408 534 772

---



5 Reilly Street, Merbein

🛏️ 3 | 🗨️ 1 | 🚗 3

### Home Sweet Home

For sale

Positioned in one of Merbein's most sought-after locations, this beautifully renovated three-bedroom brick veneer home offers space, comfort, and convenience on over a quarter of an acre allotment. On offer is an outstanding opportunity for the whole family!

---

<b>Price</b>	\$495,000 - \$544,500
<b>Viewing</b>	Sat 27th June, 10:15am - 10:45am Tues 30th June, 5:00pm - 5:30pm
<b>Contact</b>	Tom Dawe 0455 400 382

---



33 Golden Ash Drive, Mildura

🛏️ 5 | 🗨️ 2 | 🚗 3 | 🏊 1

### A Golden Opportunity Awaits

For sale

Positioned minutes from the Mildura CBD and Riverfront precinct, with its blend of indoor comfort, outdoor entertaining and exceptional shedding on a generous 1,172m<sup>2</sup> (approx.) allotment, this home delivers the space and flexibility to enjoy everyday living your way.

---

<b>Price</b>	\$730,000 - \$803,000
<b>Viewing</b>	Sat 27th June, 9:15am - 9:45am
<b>Contact</b>	Mark Thornton 0408 534 772

---



55 Ninth Street, Mildura

## Industrial Freehold In Ideal Location

For sale  
524m<sup>2</sup>

Positioned within Mildura's established industrial precinct and only moments from the CBD, this Industrial 1 zoned property presents an outstanding opportunity for owner occupiers, investors, or developers seeking a well located industrial holding.

**Price** \$725,500 - \$798,000

**Viewing** Phone for Information

**Contact** Tyler Martin 0437 654 537



5/265-283 Twelfth Street, Mildura

🛏️ 3 | 🗨️ 2 | 🚗 2

## Peaceful Golf Course Living

For sale

Welcome to this beautifully designed double-storey home, perfectly positioned in a peaceful location backing directly onto the 6th tee of the Mildura Golf Resort. Don't miss your opportunity to secure this unique residence in one of Mildura's most desirable locations.

**Price** \$750,000 - \$825,000

**Viewing** Sat 27th June, 12:00pm - 12:30pm

**Contact** Tyler Martin 0437 654 537



183 First Street, Nichols Point

🛏️ 4 | 🗨️ 2 | 🚗 2

## A Retreat Called Home

For sale

Privately nestled amongst established gardens, olive and citrus trees, this beautifully considered residence offers a lifestyle where nature, character and contemporary comfort exist in perfect harmony. Feel a world away while remaining connected to convenience!

**Price** \$1,100,000 - \$1,210,000

**Viewing** Sat 27th June, 11:00am - 11:30am

**Contact** Mark Thornton 0408 534 772



11 Johns Road, Red Cliffs

🛏️ 4 | 🗨️ 1

## Space, Serenity & Endless Potential

For sale

Positioned on a substantial 5,723m<sup>2</sup> allotment in a peaceful rural setting, this property presents the opportunity for buyers looking to unlock its full potential. Whether you're an experienced renovator or first-home buyer, the foundations are here to create something special.

**Price** \$340,000 - \$374,000

**Viewing** Sat 27th June, 10:00am - 10:30am

**Contact** Tyler Martin 0437 654 537

## HOME FOCUS



# THE LIFESTYLE PROPERTY YOU HAVE BEEN WAITING FOR

**SET** on just shy of five acres of prime rural land, this impressive lifestyle property delivers the perfect balance of space, comfort and practicality, all within minutes of the Red Cliffs township.

Offering room for families to grow, entertain and enjoy a peaceful country setting, this is a property that caters to a wide range of buyers seeking a lifestyle change without sacrificing convenience.

The well-appointed home provides three generous bedrooms two bathrooms, each complete with built-in robes, while the master bedroom is serviced by its own ensuite. Modern comfort is assured year-round with ducted reverse cycle heating and cooling installed in September 2025, providing efficient climate control throughout the home.

Outside is where this property truly shines. The expansive grounds offer endless possibilities for families, hobby farmers, horses, tradies or those simply seeking extra space to enjoy. A heated in-ground swimming pool, approximately four years old, provides the perfect setting for summer entertaining,

while two substantial 16m x 7m sheds offer exceptional storage, workshop space or vehicle storage, with one shed being only four years old.

The property is well-equipped for rural living with two megalitres of rural water allocation as well as an 18 megalitres AUL with the added bonus of town water connected to the house, and a 6.5kW solar system helping to reduce household running costs.

Positioned in a peaceful rural setting just 3km from the heart of Red Cliffs, the property enjoys convenient access to local shopping, cafes, Red Cliffs ovals and everyday amenities. Families will appreciate the proximity to both Red Cliffs East Primary School and Red Cliffs Secondary College, making school runs simple while still enjoying the benefits of country living.

A rare opportunity to secure a spacious lifestyle property with modern improvements, quality shedding and excellent infrastructure, all within easy reach of town conveniences. Properties like this don't come up often, this one is worth a look. ●



**ONE AGENCY**  
MILDURA

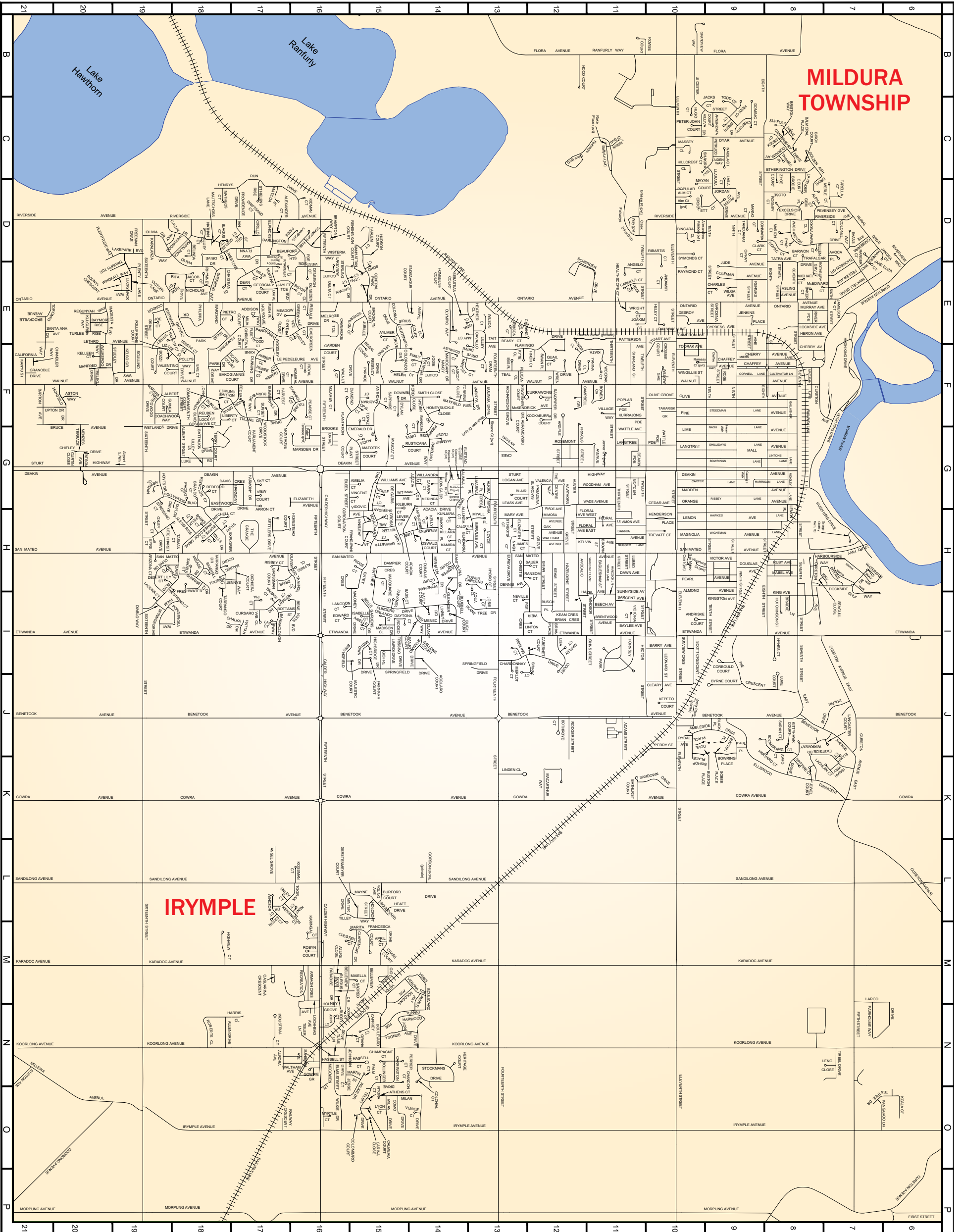


## HOME ESSENTIALS

**Address:** 52 Cassia Street, RED CLIFFS **Description:** 3 bedrooms, 2 bathrooms, pool **Price:** \$795,000 - \$874,500 **Inspect:** Saturday, 9:00am-9:30am and Monday 5:00pm-5:30pm  
**Contact:** Tom Dawe 0455 400 382, ONE AGENCY MILDURA

# Mildura-Irymple Map Index (see over)

Acacia Court.....G14	Caffrey Court.....N15	Elouera Drive.....N16	Ibis Place.....F13	Magenta Boulevard.....E20	Plenitude Way.....D20	Swan Place.....F12
Acacia Drive.....G14	Calder Highway.....G-P16	Elphicks Way.....D17	Industrial Court.....N17	Magnolia Avenue.....H9	Plenty Lane.....E19	Symonds Court.....D10
Acquaro Court.....I14	California Way.....F21	Elstead Close.....G14	Iredale Court.....E16	Mahogany Drive.....F14	Pollifrone Court.....F19	Tait Avenue.....F13
Adams Street.....J11	Calmeria Court.....O15	Emerald Drive.....F16	Irymple Avenue.....O10	Maiella Court.....M15	Pollys Way.....F18	Tamarisk Grove.....F10
Addison Court.....E17	Caloola Court.....H14	Emily Court.....F14	Isabelle Court.....E15	Majestic Court.....I15	Ponderosa Way.....I19	Taminga Court.....H16
Admiral Court.....F16	Cambridge Terrace.....E16	Endeavour Court.....E14	Isiah Way.....K7	Malbec Court.....H18	Poplar Parade.....F11	Tanduanat Court.....D9
Adrian Court.....F15	Cameron Avenue.....E10	Essex Court.....C8	Jacks Court.....C10	Maloney Drive.....I15	Popular Alm Court.....D10	Tarella Court.....D7
Aiden Way.....C9	Campbell Grove.....F12	Etherington Drive.....C8	Jacob Court.....E18	Manfred Drive.....E20	Primrose Drive.....G14	Tarrago Court.....H18
Akron Court.....G17	Canberra Avenue.....D7	Etiwanda Avenue.....I15	James Cook Drive.....H18	Manhattan Court.....E15	Princes Street.....G12	Tasman Court.....H19
Albert Street.....G18	Canning Close.....E13	Eulinga Drive.....F13	James Court.....H13	Manno Court.....D9	Providence Drive.....D17	Tatra Avenue.....D8
Aldinga Drive.....G14	Canterbury Drive.....C8	Euneva Drive.....H13	Jamieson Court.....E7	Mansell Drive.....E7	Pyap Court.....D8	Taylor Drive.....G18
Alessi Rise.....H18	Carara Court.....G14	Euston Avenue.....N21	Jandra Court.....D7	Marara Court.....F19	Quail Court.....F12	Teal Drive.....F13
Alexander Court.....D17	Carfora Drive.....C9	Evans Way.....D7	Jane Eliza Court.....E7	Margot Boulevard.....I13	Railway Crescent.....O17	Teatree Drive.....O7
Alexandrea Parade (private).....D10	Carina Close.....O15	Eve Court.....F18	Jasmine Close.....G14	Marina Walk.....H7	Rake Place (private).....C11	Teleki Drive.....O15
Alfred Close.....H16	Carmela Court.....E11	Evergreen Court.....E16	Jaylee Terrace.....E16	Marion Court.....D8	Rambling Way.....G14	Tenth Street.....E9
Alica Court.....G15	Carnegie Walk (private).....G9	Excelsior Drive.....D8	Jenkins Place.....H13	Marita Court.....M15	Ramsay Court (private).....F10	Teresa Court.....F18
Alkira Place.....G13	Carrington Drive.....N15	Explorer Drive.....H18	Jenner Court (private).....G11	Marley Court.....I12	Ranfurly Way.....B11	Terry Court.....G18
Allen Drive.....N18	Carter Lane.....G9	Eyre Court.....H19	Jennys Way.....H18	Marsden Drive.....G16	Ranger Court.....D7	Thames Place.....C8
Allunga Court.....H14	Casuarina Crescent.....M17	Fairholme Way.....N7	Jessie Court.....N16	Mary Avenue.....H13	Ransom Court.....H12	The Boulevard.....H15
Alm Court (private).....D10	Cavallo Drive.....E13	Fairpark Court.....K8	Jewel Court.....K8	Marziano Drive.....E18	Raymond Court.....E10	The Centre Way.....G12
Almond Avenue.....H9	Cedar Avenue.....G10	Fairways Drive (private).....D11	Joakim Court.....E11	Massey Close.....C10	Recreation Avenue.....M16	The Crescent.....J8
Alpha Court.....D8	Centennial Drive.....F15	Fawkner Court.....I15	Jobson Court.....E13	Matheos Court.....D18	Redford Court.....G18	The Grange.....H17
Amalfi Way.....M14	Central Park Drive.....E16	Federation Drive.....F18	Jodie Court.....F14	Matilda Place.....D17	Redwood Drive.....F19	Thirteenth Street.....H11
Amber Close.....F17	Chaffey Avenue.....F9	Felix Court.....H18	Joe Court.....E19	Matotek Court.....G15	Regal Court.....F15	Thomson Grove.....E7
Ambleside Crescent.....J9	Chaffey Lane.....F9	Fifteenth Street.....G16	John Court.....N16	Matthew Flinders Drive.....I15	Regency Parade.....F15	Tilley Way.....M15
Amelia Court.....G15	Chalka Drive.....I18	Fifth Street.....N7	John Monash Boulevard.....F18	Mattschoss Lane.....D18	Regunyah Way.....E20	Timansi Court.....I17
Amy Court.....E13	Champagne Court.....N15	Finch Court.....F12	Johns Street.....I12	Mayan Court.....D9	Reisling Court.....I13	Tireel Drive.....N7
Andamifi Court.....E10	Chandler Way.....F21	First Street.....P6	Johnson Drive.....N16	Mayfield Rise.....F14	Remi Court.....E19	Tisler Lane.....N16
Andriske Court.....I10	Chandon Court.....N15	Flamingo Drive.....F13	Jordan Avenue.....D9	Mayne Boulevard.....L15	Renee Court.....F17	Todd Court.....C9
Angel Grove.....L17	Chardonay Drive.....I12	Fleetwood Court.....E17	Josie Court.....I13	McEdward Court.....E8	Renniks Street.....E9	Toorak Avenue.....F10
Angelo Court.....E11	Charles Court.....E9	Flett Lane.....N16	Jubilee Drive.....F15	McGowan Lane.....N16	Renshinkan Court.....D16	Toorak Drive.....L17
Annuziata Court.....C9	Chase Court.....M15	Flora Avenue.....B9	Jude Avenue.....E9	McKay Place.....H14	Reuben Lock Court.....F18	Topaz Court.....F15
Anthony Street.....G15	Cherry Avenue.....F9	Floral Ave (East Court).....H11	Julia Court.....E19	McKendrick Avenue.....F13	Reynolds Court.....G18	Toronto Drive.....E21
Anwyl Close.....E14	Chester Court.....M16	Floral Ave (West Court).....H11	Juniper Court.....H14	McLaren Court.....F16	Rhymney Court.....E18	Torrens Close.....F14
April Court.....M15	Chifley Drive.....G20	Floral Avenue.....H11	Kaitlyn Court.....E18	Meadow Grove.....E16	Ribarits Court.....D10	Touriga Court.....H18
Aqua Close.....H13	Christian Court.....E18	Floral Avenue East.....H12	Kalimna Drive.....H14	Melrose Drive.....E16	Richardson Grove.....F13	Tower Gardens.....H13
Argyle Street.....G12	Christie Parade.....I13	Floral Avenue West.....H12	Kamira Court.....H14	Menzies Terrace.....G20	Ridge Court.....H15	Trafalgar Drive.....D8
Arielle Court.....I15	Christina Court.....E17	Flynn Drive.....D18	Kane Drive.....F17	Merinda Court.....G14	Risbey Court.....H17	Trelega Drive.....F20
Arizona Court.....H19	Cirillo Drive.....E17	Ford Close.....F14	Kangaroo Drive.....O7	Merle Court.....D7	Risbey Lane.....G9	Trevatt Court.....H10
Armagh Crescent.....M16	Clancy Way.....I14	Fourteenth Street.....J13	Kanyu Street.....F21	Merlot Court.....I13	Rita Drive.....E18	Trissino Drive.....I15
Ascot Court.....F14	Claremont Drive.....M15	Francesca Drive.....M15	Karadoc Avenue.....M9	Michael Court.....E8	Rivanna Court.....F16	Triumph Terrace.....E20
Ashwood Court.....F14	Clark Court.....D9	Frangipani Court.....H15	Karalanza Drive.....D18	Michaela Lane.....G8	River Parade.....E8	Tschirpig Lane.....G9
Asling Avenue.....E8	Cleary Avenue.....J10	Freeman Drive.....D19	Karingal Court.....M16	Midtown Drive.....I15	Riverside Avenue.....D9	Tulane Drive.....F17
Aston Way.....F20	Cleek Way (private).....D11	Freshwater Court.....H18	Karinya Drive.....F13	Miers Lane.....F9	Riverview Way.....D6	Tunee Lane.....N16
Athens Court.....O15	Coachwood Way.....F19	Fush Place.....E17	Keam Crescent.....I12	Milan Drive.....O15	Roberts Close.....N18	Turlee Rise.....E20
Aurora Street.....N17	Coleman Avenue.....E9	Gallagher Lane.....G8	Keam Street.....H12	Miles Court.....E17	Robyn Court.....M16	Twelfth Street.....I11
Avoca Place.....D7	Colombard Court.....O15	Gallone Court.....I14	Kedmenec Drive.....I14	Milia Court.....E17	Rodeo Drive.....I15	Ularara Drive.....D9
Avocado Street.....I12	Colonel Court.....D7	Gambetta Court.....H15	Kelleen Court.....F20	Miller Avenue.....H15	Rodger Street.....J12	Ulmarra Place.....G13
Avro Court.....K8	Colonial Court.....N14	Garden Court.....F16	Kelly Court.....H14	Milwewa Avenue.....N20	Rodi Court.....E11	Unley Court.....L17
Aylmer Court.....F15	Colonial Drive.....E15	Gardenia Street.....E9	Kelso Grove.....F19	Mimosa Avenue.....H12	Rodney Court.....D8	Upland Drive.....F15
Azure Close.....M16	Colorado Drive.....F15	Gem Place.....D8	Kelvin Avenue.....H12	Minter Drive.....L16	Romano Drive.....I14	Upton Drive.....F20
Baffly Lane (private).....C11	Commonwealth Court.....F18	George Chaffey Mom. Rd.....D8	Kensington Court.....L16	Mirage Drive.....H18	Rose Street.....F9	Vab Close.....I17
Baker Court.....E8	Como Drive.....O15	Georgia Court.....E17	Kent Court.....L16	Mitchell Court.....H18	Rosemont Avenue.....G12	Valencia Avenue.....G12
Bakogiannis Court.....F17	Condor Drive.....E19	Gerstenmeyer Court.....L15	Kepeto Court.....J10	Montana Drive.....E17	Rothbury Grove.....E8	Valentino Court.....F19
Balmoral Place.....C8	Coonawarra Close.....D8	Giddings Place.....I12	Kiata Drive.....F12	Montrose Court.....F16	Rowse Court.....B11	Valley View Court.....F19
Banjo Court.....I14	Coorong Avenue.....O20	Gill Court.....D17	Kidman Court.....D16	Morlee Court.....D18	Roy Harwood Drive.....N15	Venice Court.....O14
Banks Court.....H18	Corbould Court.....I9	Gina Close.....G15	Kilburn Court.....I9	Morpung Avenue.....I14	Royal Court.....F16	Verdi Boulevard.....N15
Banksia Court.....F14	Cornell Lane.....F9	Giofre Drive.....I15	Killara Court.....H14	Murray Avenue.....E8	Ruby Avenue.....H8	Verona Terrace.....M14
Barraclough Way.....I17	Coronation Court.....H15	Giovanna Court.....M15	Kilpatrick Lane.....N16	Muscat Court.....G15	Ruddy Court.....M16	Victor Avenue.....H9
Barry Avenue.....I10	Cosgrove Court.....G18	Golden Ash Drive.....C8	King Avenue.....I8	Myall Place.....H13	Rufous Way.....M16	Victory Lane.....E19
Barton Avenue.....F21	Cottonwood Court (private).....G14	Gordon Drive (private).....L14	Kingfisher Court.....F13	Myra Crescent.....G13	Rural Drive.....D7	Village Way.....F11
Barwon Court.....D8	Cowra Avenue.....K7	Gorie Grove.....N16	Kingstone Avenue.....O16	Myrtle Court.....N16	Rusticana Court.....G15	Villiva Drive.....C10
Bass Court.....I15	Crockett Court.....D9	Grandview Parade.....B10	Kittyhawk Court.....J8	Nabila Court.....C9	Rydal Avenue.....J10	Vincent Court.....G15
Batey Crescent.....H15	Crosbie Court.....F10	Greenvale Parade.....E16	Koala Court.....O6	Nancy Court.....F14	Sacred Court.....M16	Vincor Place (private).....J10
Bathurst Court.....K11	Cross Court.....H15	Grenoble Drive.....F21	Kookaburra Court.....F12	Nash Court.....H13	Sahara Court.....H18	Vine Street.....E9
Battalion Drive.....G18	Crown Court.....E16	Grossman Court.....H17	Koorlong Avenue.....N11	Nash Lane.....F9	San Mateo Avenue.....H18	Vineleaf Street.....H15
Batten Place.....J9	Cultivator Lane.....F8	Gugger Lane.....H11	Kossman Court.....L16	Nathan Court.....D18	San Mateo Court (private).....H10	Wade Avenue.....G12
Baylee Avenue.....I11	Cureton Avenue.....F7; K7	Guinea Court.....F19	Kulcurna Way.....E20	Nevada Court.....H19	Sandhill Court.....H18	Wagstaff Lane.....H11
Baymore Rise.....E20	Cureton Avenue East.....I8	Gulf Way.....I7	Kovac Court.....D8	Neville Court.....I13	Sandilong Avenue.....L11	Walnut Avenue.....F17
Beasy Court.....E13	Cureton Avenue S/R.....I8	Hancock Lane.....I11	Kunjara Court.....H14	Newman Close.....G19	Sandown Drive.....K10	Walnut Court.....F16
Beauford Heights.....D17	Curran Close (private).....E12	Hanswood Way.....D18	Kurrajong Parade.....F11	Niblick Close (private).....C11	Sandpiper Drive.....F12	Waltham Avenue.....H12
Beech Avenue.....I11	Currawong Court.....F12	Harbourside Way.....H16	Kyamber Court.....E16	Nicholas Avenue.....H7	Santa Ana Avenue.....E20	Waltham Avenue.....N16
Bejon Court.....E16	Cursaro Drive.....I17	Harlem Court.....D15	Kyte Close.....F13	Ninth Street.....J9	Santolina Drive.....H14	Wanera Way.....D7
Belinda Court.....D18	Curtin Close.....G20	Harmony Drive.....G17	Lachlan Court.....K7	Noble Court.....G15	Sapphire Court.....F15	Ward Lane.....H11
Belle Gardens Drive.....I15	Cynthia Close.....E17	Harris Close.....N18	Laguna Court.....I19	Nonda Close.....F12	Sarah Court.....J8	Washington Drive.....E7
Bellevue Drive.....M16	Cypress Avenue.....E9	Harrison Lane.....G8	Laila Court.....D9	Noyce Court.....H13	Sargent Avenue.....I11	Waterside Way.....H7
Bene Vista Boulevard.....I17	Damien Court.....F17	Hartley Court.....F14	Lainie Court.....I17	Nyora Court.....O15	Sarnia Avenue.....H11	Watson Avenue.....G20
Benetook Avenue.....J15	Dampier Crescent.....H15	Harvard Court.....J8	Lakepark Boulevard.....D19	Oak Avenue.....H12	Sauer Court.....H13	Wattle Avenue.....G11
Bingara Close.....D10	Darlington Parade.....D16	Harvest Court.....F17	Le Amon Avenue.....H11	Oasis Boulevard.....H18	Scherger Drive.....E11	Wattle Parade.....G10
Birch Court.....C8	Davis Crescent.....G18	Harvey Court.....E16	Le Pedeleure Avenue.....F17	Oleander Court.....H14	Scott Crescent.....I-J 10	Waukeroo Way.....F20
Birksgate Close.....D17	Davlin Drive.....D18	Hassell Court.....N15	Leask Avenue.....G13	Oliver Avenue.....F9	Scullino Way.....F19	West Crescent.....I13
Birralee Avenue.....G13	Dawn Avenue.....H11	Hassell Street.....N16	Leicester Street.....C10	Olive Grove.....F10	Seagull Close.....H8	Westside Boulevard.....E16
Bishop Place.....J10	Daytona Court.....I15	Hatly Court.....I14	Leichhardt Drive.....H19	Olivewood Drive.....H17	Sebastian Court.....E14	Westwind Court.....I19
Black Place.....J9	De Garis Drive.....H15	Hattah Drive.....I17	Lemon Avenue.....H9	Olivia Drive.....D19	Sebastens Crescent.....H15	Wetlands Drive.....F19
Blagus Court.....D17	Deakin Avenue.....G8-21	Havilah Crescent.....G13	Lemon Place.....H8	Olympic Court.....E14	Semmens Crescent.....H15	Wightman Lane.....H9
Blair Court.....G13	Deakin Parade.....G11	Hawkes Lane.....H9	Leng Close.....N7	Ontario Ave (Hospital Ent.).....E11	Settlers Drive.....H17	Wilga Avenue.....E9
Bligh Court.....I14	Dean Court.....E17	Hawthorn Grove.....H12	Leonard Street.....J10	Ontario Avenue.....E17	Seventh Street.....I8	Willkie Drive.....N15
Bluebell Court.....I14	Delta Court.....E16	Hazel Avenue.....I12	Lethro Avenue.....F19	Ontario Park Drive.....E18	Seventh Street East.....J8	Willandara Court.....G14
Bluey Court.....D18	Denbeigh Court.....E16	Hazeldene Street.....I12	Lever Court.....H15	Opal Court.....F15	Sharika Court.....C9	Williams Avenue.....G15
Bollinger Court.....N15	Dennis Avenue.....H13	Heaft Drive.....L15	Liberty Court.....F18	Opray Court.....D9	Sharland Street.....F11	Willow Grove.....F10
Bologna Avenue.....M15	Desert Lily Court.....H19	Healthscope Court.....E11	Lilley Drive.....F14	Oram Court.....F13	Sheridan Court.....G15	Wills Court.....H18
Boomerang Court.....J9	Desroy Avenue.....E10	Healy Walk.....G9	Lilley Lane.....G18	Oran Court.....N16	Sherring Way.....E18	Wilson Court.....E13
Boronia Court (private).....G14	Diablo Way.....I19	Heather Close.....E13	Lime Avenue.....G9	Orange Avenue.....G9	Skillidays Lane.....G9	Windsor Court.....L17
Bothroyd Court.....J12	Diamond Court.....F16	Hector Street.....J11	Limestone Court.....D18	Orlando Court.....I15	Shillidays Lane.....G9	Windsor Street.....I11
Bottoms Street.....I16	Dichiera Court.....H18	Heidy Court.....C9	Limpidi Drive.....I15	Oswald Court.....H14	Shiraz Court.....I12	Wingillie Street.....F10
Bottlebrush Court (private).....G14	Docks Drive.....H7	Helen Court.....F15	Linden Close.....K13	Oxley Court.....H19	Sirius Court.....E15	Wirraway Drive.....J8
Bounty Crescent.....E19	Dofin Drive.....J7	Heley Court.....E10	Linney Road.....I14	Pacino Court.....G18	Sixteenth Street.....F19	Wisteria Way.....D16
Bowen Crescent.....F11	Dominic Court.....C9	Henderson Place.....H10	Linton Court.....I13	Palm Court.....N15	Sixth Street.....E7	Wittman Avenue.....G15
Bowring Place.....J9	Donmaria Court.....D9	Henrys Run Drive.....D17	Lintons Lane.....G8	Palm Springs Drive.....I19	Sky Court.....G17	Woodham Avenue.....G11
Bowrings Lane.....G9	Douglas Avenue.....H9	Herbert Court.....I17	Lisa Court.....I12	Palm Terrace (private).....G16	Sloane Court (private).....F13	Woodley Drive.....F17
Boyden Street.....G11	Dove Place.....J10	Heritage Court.....N14	Liv Close.....F16	Panorama Drive.....E17	Smith Court.....F14	Woodstock Drive.....F17
Bozzi Court.....F19	Downie Drive.....F15	Heron Avenue.....E8	Lizlee Drive.....F18	Paperbark Court (private).....G14	Sobee Place (Parkland).....J9	Woorak Court.....F11
Braidie Lane.....J8	Dr. Abramowski.....F13	Herston Drive.....H14	Lochhead Avenue.....M16	Paradise Drive.....M16	Soho Court.....E15	Woorlong Court (private).....H10
Brampton Way.....D16	Driftsand Court.....D17	Hibiscus Drive (private).....G14	Lockside Avenue.....E8	Park Way.....F18	Sotiri Court.....F18	Wren Close.....F12
Brando Court.....G18	Dundas Court.....H14	Highbridge Court.....I15	Logan Avenue.....G13	Parliament Court.....F17	Sottiri Court.....F18	Wright Court.....E11
Brassie Place (private).....D11	Dune Drive.....H18	Highfield Drive.....F20	Louisiana Court.....E17	Pasadena Grove.....H12	St. Helens Rise.....D17	Wyndham Court.....H14
Brent Court.....C9	Duneden Close.....E16	Highview Court.....M18	Lubbock Street.....H11	Patricia Drive.....F14	St. Neots Court.....H13	Yanina Close.....F12
Brentwood Avenue.....I11	Dunlop Court.....F18	Hillcrest Close.....C10	Lucky Mack Way.....E19	Patterson Avenue.....E11	Standford Rise.....D16	Young Avenue.....L15
Brian Crescent.....I12	Dunning Drive.....F17	Holcroft Street.....L15	Luke Court.....J8	Paul Place.....J9	Star Court.....E16	Ysonde Avenue.....N15
Brian Street.....I12	Durham Avenue.....C8	Hollywood Boulevard.....G18	Luke Road.....G18	Pearl Avenue.....H9	Sturt Court.....H18	Zodiac Court.....N16
Bridge Way.....H7	Dyar Avenue.....C9	Holyoke Way.....E17	Lyne Court.....O15	Pearse Court.....F16	Sturt Highway.....G17	
Bristol Way.....C8	Dylan Court.....F15	Homebush Court.....E14	Mabel Avenue.....H8	Peglar Avenue.....E7	Suffolk Drive.....C8	
Brockville Avenue.....E21	Eaglesham Street.....H11	Homeside Drive.....H17	Macarthur Way.....K12	Pelican Close.....F13	Summerhill Drive.....F17	
Brodie Close.....D8	Eastside Drive.....J7	Honeysuckle Close.....F14	Macquarie Court.....H15	Perrier Court.....N15	Sunbeam Avenue.....N16	
Brooklyn Court.....E15	Eastwood Drive.....G18	Hood Court.....B12	Maclean Lane.....F8	Perry Street.....J10	Sunnyside Avenue.....H11	
Brooks Drive.....G16	Eaton Court.....L17	Hornsey Park.....I11	Madden Avenue.....G9	Peter Court.....D9	Sunrise Drive.....H18	
Bruce Avenue.....G20	Edmund Barton Court.....F18	Hoyts Drive.....G19	Madison Close.....I15	Peter-John Court.....C10	Sunset Court.....F17	
Brown Street.....H11	Edward Court.....I16	Hudson Court.....D15		Petrucchi Way.....C9	Sunview Crescent.....I10	
Bundarra Court.....H13	Eighth Street.....I18	Hugh King Drive.....H7		Pevensy Grove.....D8		
Burford Court.....L15	Eileen Street.....G16	Hugo Court.....C10		Philippa Crescent.....E18		
Burke Court.....H18	Eleventh Street.....K10	Hunter Street.....H12		Pia Court.....I17		
Burnside Way.....F17	Elijah Court.....K7	Hutchinson Street.....I8		Pianta Parade.....N15		
Burrows Street.....H12	Elizabeth Avenue.....G16	Hyder Drive.....F14		Pietro Court.....E18		
Busch Place.....I12	Elizabeth Court.....H13	Hydro Court.....H13		Pine Avenue.....F9		
Buxton Place (Parkland).....J9	Ellen Court.....D8	Hynes Court.....I8		Plant Tree Drive.....I13		
Byrne Court.....J9	Ellswood Crescent.....J9	Ian Street.....D17		Plantation Street.....G16		
Cabernet Court.....I12	Elms Street.....O16					



# What are the 3 most important factors in real estate?

“Location, Location,  
Location.”

Ask your agent - “Will my property be seen in  
the Sunraysia Daily Real Estate Guide?”



**SunraysiaDaily**  
REAL ESTATE GUIDE